

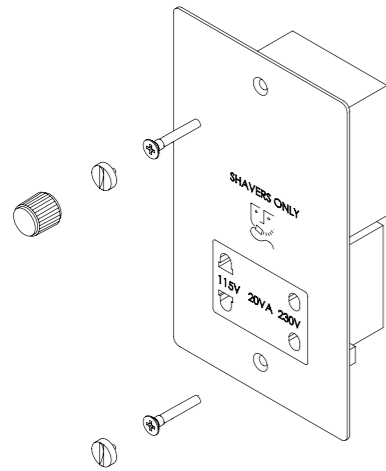
BUSTER + PUNCH
LONDON

ELECTRICITY
SHAVER SOCKET



BUSTERANDPUNCH.COM
L0085

ALL PARTS INCLUDED:



EN

TECHNICAL SPECIFICATION

115V / 230V SHAVER SOCKET:
2 GANG
INPUT: 240V/50HZ
OUTPUT: 115AC@20VA
OUTPUT: 230VAC@20VA

IMPORTANT NOTES

PLEASE READ BEFORE INSTALLING

These products must be installed in accordance with the latest Building and IEE wiring regulations. If in any doubt, please contact a qualified electrician.

** NOTE- THIS ISOLATOR SHALL BE SO SITUATED AS TO BE INACCESSIBLE TO A PERSON USING A FIXED BATH OR SHOWER.

BACK BOXES

We recommend you to use a UK back box to install your product. Please note that the minimum recommended depth for the mounting box is 47mm. Back boxes are available to purchase from us, please see recommended sizes below:

PLATE	RECOMMENDED BACK BOX
2G	2G UK Back box – SKU# ELB922

WARRANTY INFORMATION

The Warranty Period of Two (2) years from the date of the original purchase.

RECYCLING ELECTRICAL PRODUCTS

Buster and Punch encourages all its customers to make note of this symbol and avoid putting any waste electrical goods in your domestic waste bin or container. Please ensure you take your waste electrical goods to a suitable facility for disposal.



1



BEFORE COMMENCING WORK, ISOLATE THE MAINS POWER SUPPLY AND REMOVE THE FUSE IN THE FUSE BOX OR SWITCH OFF THE CIRCUIT BREAKER IN THE CONSUMER UNIT.



2

If unit is to be used as a replacement for an existing product, remove existing unit from its location and disconnect the wiring.



CAUTION:
Verify power is OFF to switch before proceeding.

3

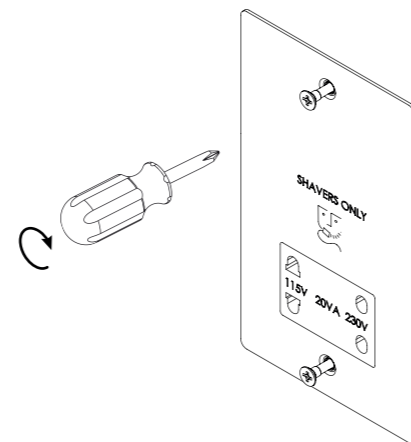
Certain items in the range will not fit into a 4 lug box. If such a box has been previously installed the top and bottom lugs should be removed or bent back to avoid contact with the interior.

5

Use a cross head electric or manual screwdriver to fit the special countersunk screws until tight.*



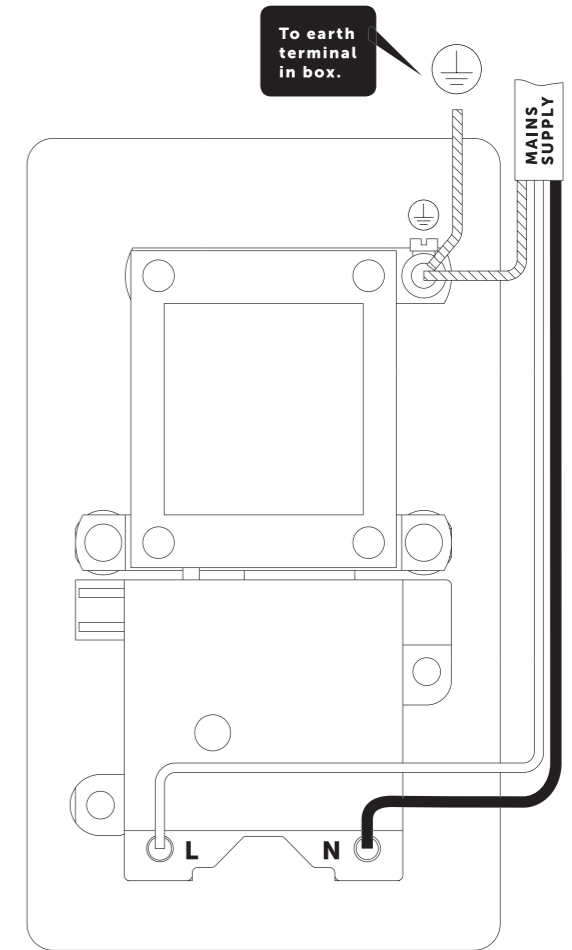
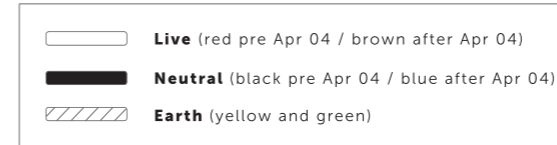
CAUTION:
To reduce the risk of discolouration or tarnishing, avoid installation on wet plaster.



* Please ensure screws are sufficiently tight to support the product but please do not over tighten as this may cause some deformation to the plate or damage the screw.

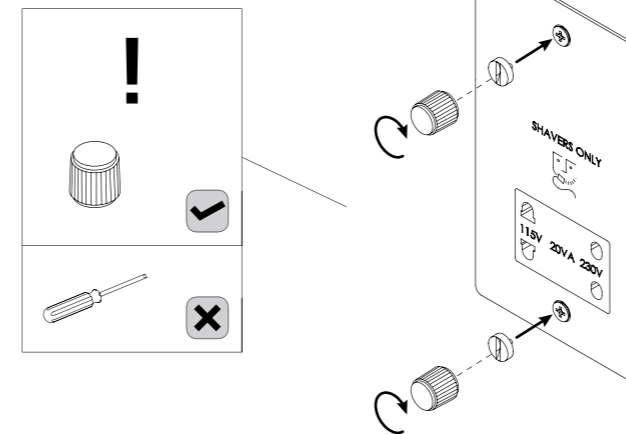
4

Connect the wires as shown in appropriate wiring diagrams. Use green/yellow sleeving on earth conductors. Ensure terminals are properly tightened and no bare wire is visible. Carefully arrange wiring to lie along the edge of the product or box, keep the central area clear. Push back unit into mounting box making sure conductors are not trapped.



6

By hand, screw the coin caps into the end of the screws. Use the plastic coin cap tool to fully tighten the coin caps.**



** Do NOT use a standard screw driver to tighten the coin caps. This may damage the cap and is not covered under warranty. Plastic coin cap tool must be used by hand only.

7

Turn power back on.



BUSTER + PUNCH

LONDON

SHAVER SOCKET / DUAL VOLTAGE 115V / 230V

TECH SPEC



SHAVER SOCKET / DUAL VOLTAGE 115V / 230V
WHITE



SHAVER SOCKET / DUAL VOLTAGE 115V / 230V
BLACK

SHAVER SOCKET / DUAL VOLTAGE 115V / 230V

Sleek & slim with softly rounded corners, the Buster and Punch Electricity range combines functionality with stunning good looks. This product is part of an extensive range that transforms forgotten home fittings into unforgettable items. Available in 5 finishes, these solid metal wall plates are finished with our signature penny button screw details.

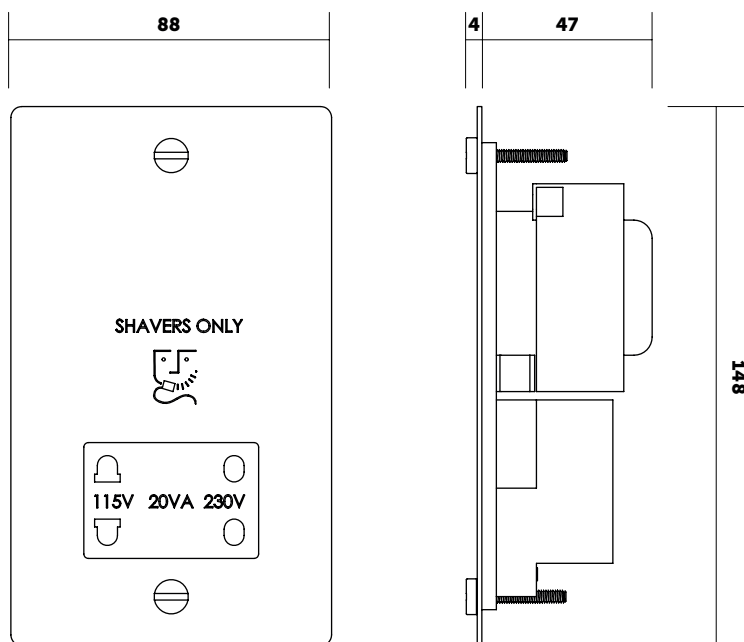
busterandpunch.com
info@busterandpunch.com



LONDON

SHAVER SOCKET / DUAL VOLTAGE 115V / 230V

TECH SPEC



FINISH	SKU	SPECIFICATIONS
<div style="display: flex; align-items: center;"> <div style="width: 20px; height: 20px; background-color: white; border: 1px solid black; margin-right: 5px;"></div> white </div>	GTG-14173	Input: 240V / 50HZ Output: 115AC / 230VA / 50Hz Current rating: 20VA Class 1 / Must be earthed. Location: Internal Use Only / IP21 protection Certification: ASTA Diamond Mark BS EN 61558-2-5: 2010 (conj. BS EN 61558-1:2005 +A1:2009) Care instructions Wipe clean with a dry, non-abrasive microfiber cloth. Avoid use of chemical cleaners. Please note that finishes may age naturally with time and regular use.
<div style="display: flex; align-items: center;"> <div style="width: 20px; height: 20px; background: linear-gradient(to top right, transparent 49%, black 49%, black 51%, white 51%); border: 1px solid black; margin-right: 5px;"></div> steel </div>	GTG-07172	
<div style="display: flex; align-items: center;"> <div style="width: 20px; height: 20px; background-color: #c08040; border: 1px solid black; margin-right: 5px;"></div> brass </div>	GTG-05169	
<div style="display: flex; align-items: center;"> <div style="width: 20px; height: 20px; background-color: #654321; border: 1px solid black; margin-right: 5px;"></div> smoked bronze </div>	GTG-09171	
<div style="display: flex; align-items: center;"> <div style="width: 20px; height: 20px; background-color: black; border: 1px solid black; margin-right: 5px;"></div> black </div>	GTG-02170	

SHAVER SOCKET / DUAL VOLTAGE 115V / 230V

FAQ SHEET

CATEGORY	QUESTION	ANSWER
INSTALL	Can I install a socket myself?	We always recommend that our products are installed by a qualified electrician. Always refer to the safety notices within the instruction manual before attempting install.
INSTALL	Will this fit my existing backbox?	1G: W 140mm x H 70mm x D 47mm, square back box. Back boxes can be supplied on request.
CUSTOMISE	Can I customise the appearance of my shaver socket?	Lots of our products are customisable with interchangeable penny button screws available in 5 finishes. Please contact one of our sales representatives for custom requirements.
SAFETY	Can I charge other devices with my shaver socket?	It is not recommended to use this dedicated shaver socket with other appliances, even if those devices fall within the maximum power rating of the socket. Doing so may result in potentially dangerous situations. NEVER EXCEED THE MAXIMUM RATING OF THE SOCKET.

WEEE directive

Regulations require the recycling of waste from Electrical and Electronic Equipment (European 'WEEE Directive' effective August 2005 -UK WEEE regulations effective 2nd January 2007).

Environment Agency Registered Producer: WEE/MM5108AA

When your product comes to the end of its life or you choose to replace it, please recycle it where facilities exist.
DO NOT DISPOSE WITH HOUSEHOLD WASTE.