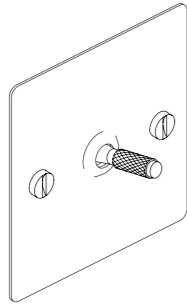


BUSTER + PUNCH
ELECTRICITY
INTERMEDIATE SWITCH



BUSTERANDPUNCH.COM
L0075

EN

TECHNICAL SPECIFICATION

1 GANG 10 AX INTERMEDIATE TOGGLE SWITCH.
RATED AT 10AX 250V~

IMPORTANT NOTES

PLEASE READ BEFORE INSTALLING

These products must be installed in accordance with the latest Building and IEE wiring regulations. If in any doubt, please contact a qualified electrician.

BACK BOXES

We recommend you to use a UK back box to install your product. Please note that the minimum recommended depth for the mounting box is 25mm. Back boxes are available to purchase from us, please see recommended sizes below:

TOGGLE PLATE	RECOMMENDED BACK BOX
1G	1G UK Back box – SKU# ELB921

WARRANTY INFORMATION

The Warranty Period of Two (2) years from the date of the original purchase.

RECYCLING ELECTRICAL PRODUCTS

Buster and Punch encourages all its customers to make note of this symbol and avoid putting any waste electrical goods in your domestic waste bin or container. Please ensure you take your waste electrical goods to a suitable facility for disposal.



1



BEFORE COMMENCING WORK, ISOLATE THE MAINS POWER SUPPLY AND REMOVE THE FUSE IN THE FUSE BOX OR SWITCH OFF THE CIRCUIT BREAKER IN THE CONSUMER UNIT.



2

If unit is to be used as a replacement for an existing product, remove existing unit from its location and disconnect the wiring.



CAUTION:
Verify power is OFF to switch before proceeding.

3

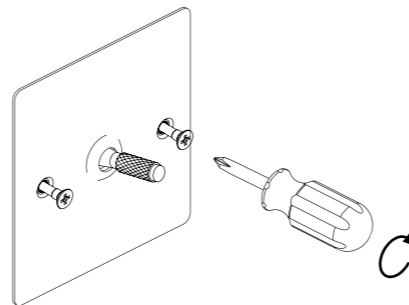
Certain items in the range will not fit into a 4 lug box. If such a box has been previously installed the top and bottom lugs should be removed or bent back to avoid contact with the interior.

5

Use a cross head electric or manual screwdriver to fit the special countersunk screws until tight.*



CAUTION:
To reduce the risk of discolouration or tarnishing, avoid installation on wet plaster.



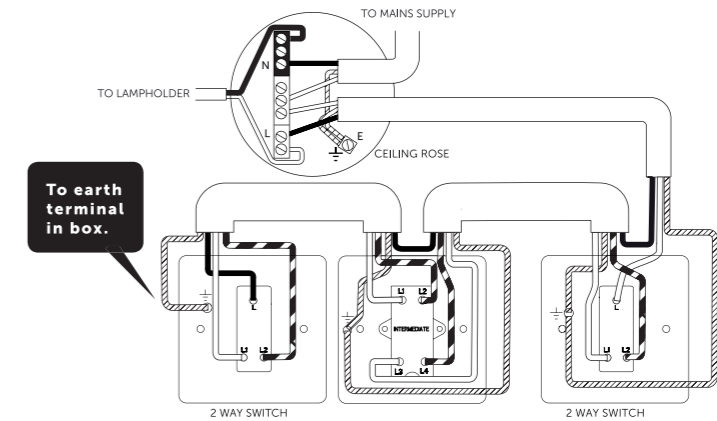
* Please ensure screws are sufficiently tight to support the product but please do not over tighten as this may cause some deformation to the plate or damage the screw.

4

Connect the wires as shown in appropriate wiring diagrams. Use green/yellow sleeving on earth conductors that are not insulated. Ensure terminals are properly tightened and no bare wire is visible. Push back unit into moulding box making sure conductors are not trapped.

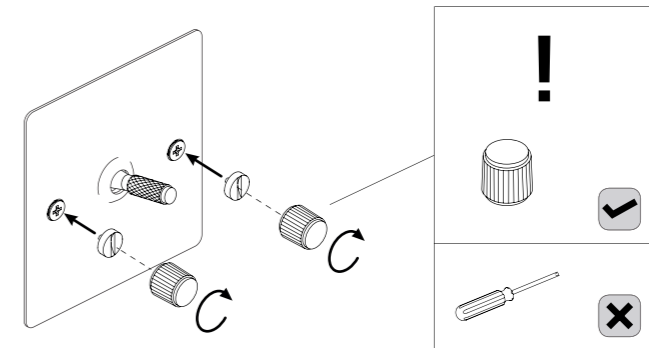


10AX INTERMEDIATE SWITCH AND TOGGLE SWITCH



6

By hand, screw the coin caps into the end of the screws. Use the plastic coin cap tool to fully tighten the coin caps.**



** Do NOT use a standard screw driver to tighten the coin caps. This may damage the cap and is not covered under warranty. Plastic coin cap tool must be used by hand only.

7

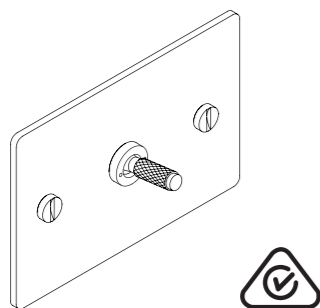
Turn power back on.



BUSTER + PUNCH

ELECTRICITY

1G, 2G, 3G & 4G
ANZ TOGGLE



BUSTERANDPUNCH.COM
L0068

EN

TECHNICAL SPECIFICATION

STANDARD 2 WAY SWITCH.
RATED AT 10AX 250V~ AC ONLY.
APPROVAL NO. SAA-171697-EA.

IMPORTANT NOTES

PLEASE READ BEFORE INSTALLING

1. All wiring and installation must adhere to the latest local and national wiring rules - e.g. AS/NZS 3000 in Australia & New Zealand.
2. Must be installed by a licensed electrician.
3. Do not exceed the rated power input specification.
4. This product is suitable for indoor use only.



WARNING: The two mounting screws on the faceplate must be well tightend to maintain the earthing continuity. Check their earthing continuity by multimeter before screw on the decorative cap. The resistance between the two mounting screws must not exceed 0.1 Ω.

WARRANTY INFORMATION

The Warranty Period of Two (2) years from the date of the original purchase.

RECYCLING ELECTRICAL PRODUCTS

Buster and Punch encourages all its customers to make note of this symbol and avoid putting any waste electrical goods in your domestic waste bin or container. Please ensure you take your waste electrical goods to a suitable facility for disposal.



1



BEFORE COMMENCING WORK, ISOLATE THE MAINS POWER SUPPLY AND REMOVE THE FUSE IN THE FUSE BOX OR SWITCH OFF THE CIRCUIT BREAKER IN THE CONSUMER UNIT.



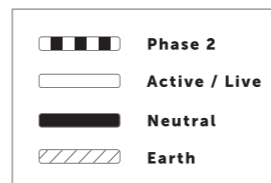
2

If unit is to be used as a replacement for an existing product, remove existing unit from its location and disconnect the wiring.



CAUTION:
Verify power is OFF to switch before proceeding.

3

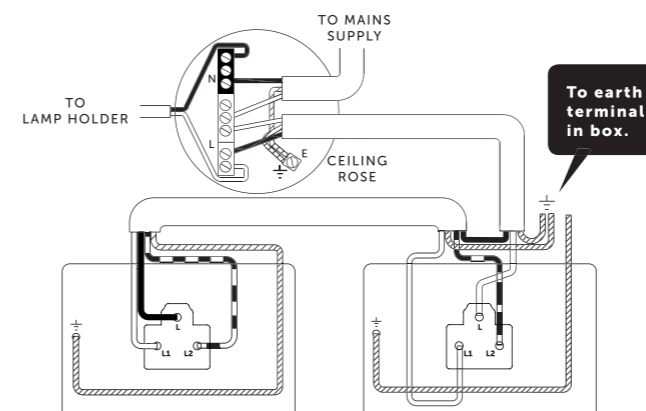


Connect the wires as shown in appropriate wiring diagrams. Use green/yellow sleeving on earth conductors that are not insulated. Ensure terminals are properly tightened and no bare wire is visible. Push back unit into moulding box making sure conductors are not trapped.

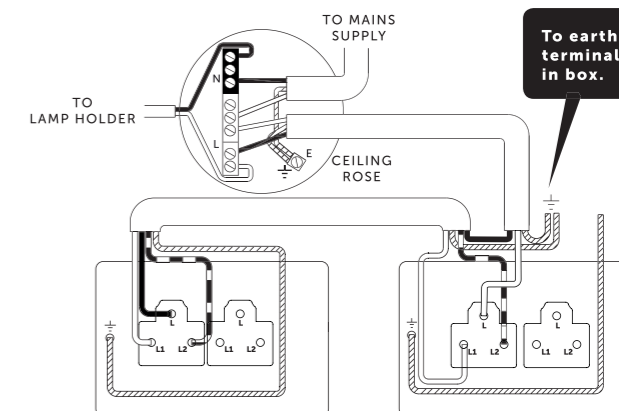
NOTE:

The plate must be earthed at the earth point

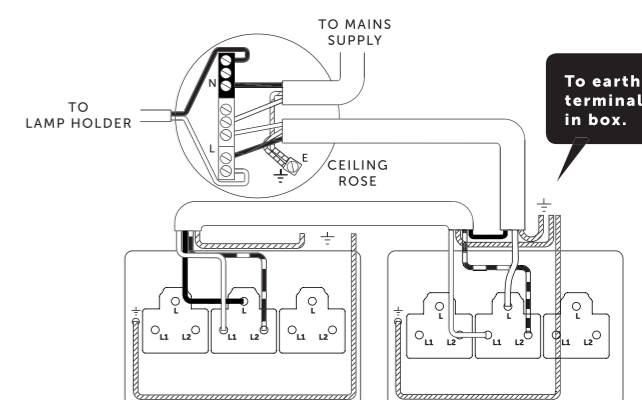
3 a) 1 GANG 2 WAY 10AX AND TOGGLE SWITCH



3 b) 2 GANG 2 WAY 10AX AND TOGGLE SWITCH

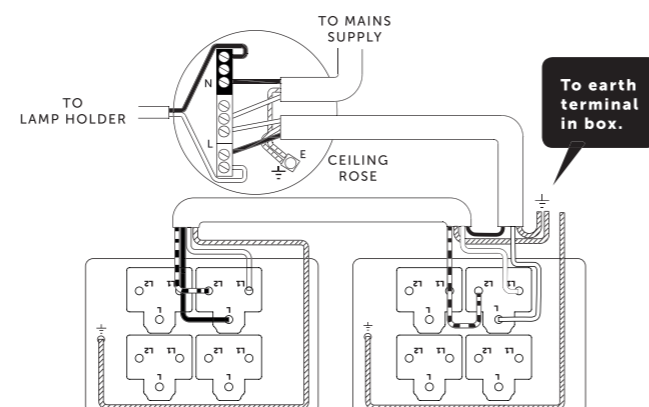


3 c) 3 GANG 2 WAY 10AX AND TOGGLE SWITCH



3 d) 4 GANG 2 WAY 10AX AND TOGGLE SWITCH

NOTE:
To ensure your toggles operate in the same orientation for on and off for the top and bottom rows, you need to wire your top row of toggles in same order to the bottom row.

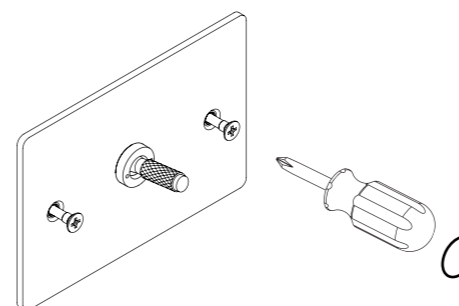


4

Use a cross head electric or manual screwdriver to fit the special countersunk screws until tight.*



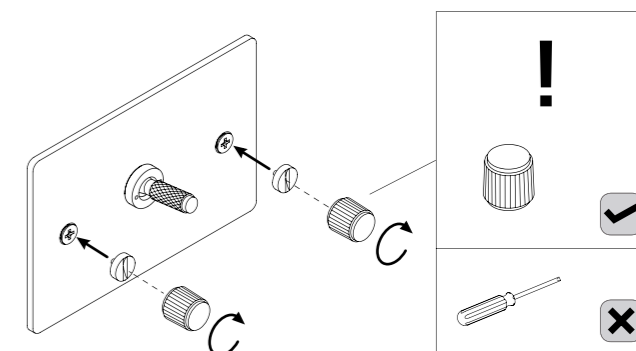
CAUTION: To reduce the risk of discolouration or tarnishing, avoid installation on wet plaster.



* Please ensure screws are sufficiently tight to support the product but please do not over tighten as this may cause some deformation to the plate or damage the screw.

5

By hand, screw the coin caps into the end of the screws. Use the plastic coin cap tool to fully tighten the coin caps.**



**** Do NOT use a standard screw driver to tighten the coin caps. This may damage the cap and is not covered under warranty. Plastic coin cap tool must be used by hand only.**

6

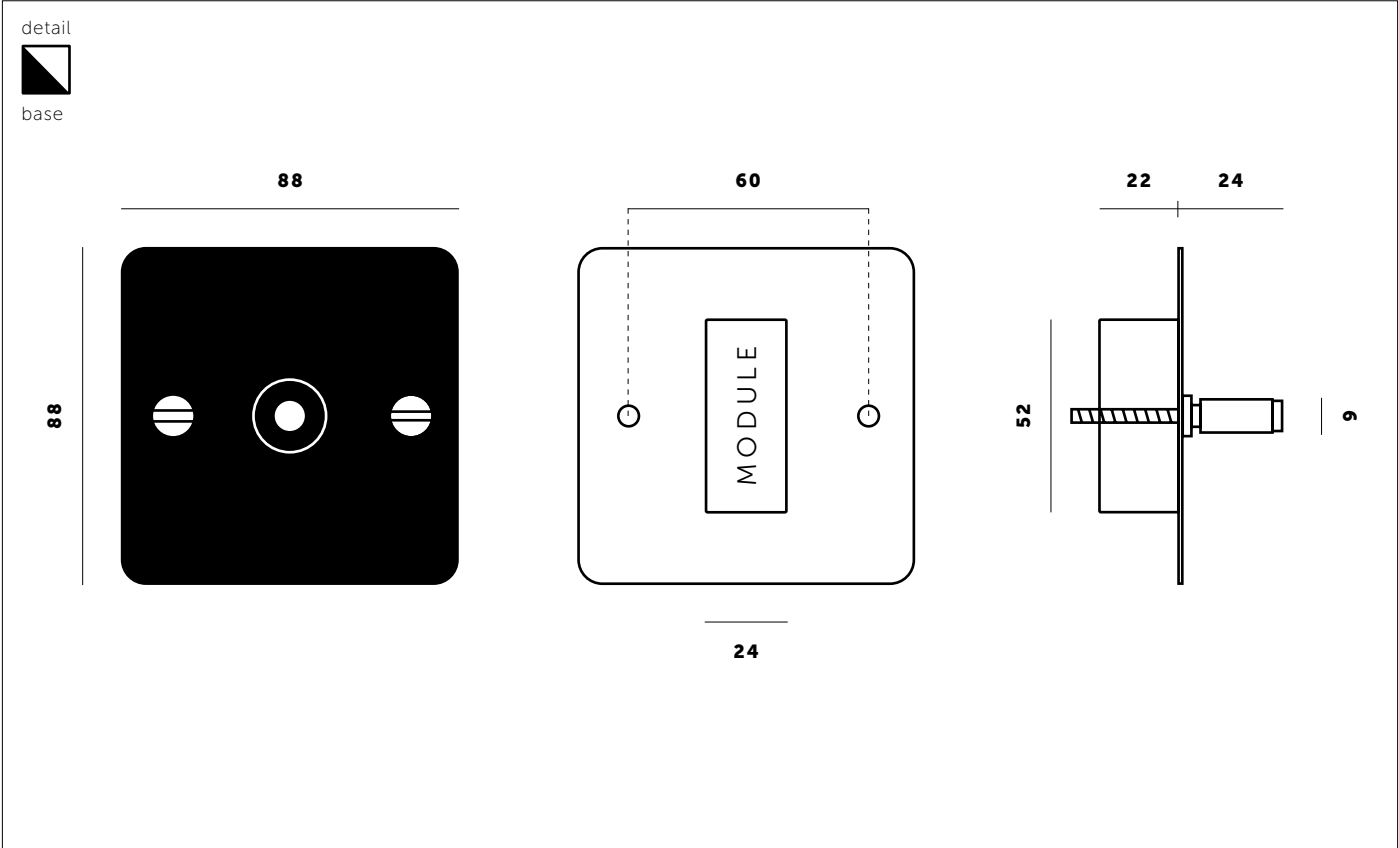
Turn power back on.





1G INTERMEDIATE TOGGLE SWITCH

TECH SPEC



SPECIFICATIONS			
Single switch 3-way 240 V		Recommended back box: 1G square back box - 47mm depth Can be supplied on request	
Not supplied in 2G, 3G or 4G		Care instructions Wipe with damp cloth with no loose hairs, avoid using any chemicals. Please note all finishes are prone to aging.	
CE-tested for use throughout Europe.			
FINISH (base / detail)	SKU	FINISH (base / detail)	SKU
white	UK-TO-CO-INT-WH-A	smoked bronze	UK-TO-CO-INT-SM-A
white / brass	UK-TO-CO-INT-WH-BR-A	smoked bronze / brass	UK-TO-CO-INT-SM-BR-A
steel	UK-TO-CO-INT-ST-A	black	UK-TO-CO-INT-BL-A
steel / brass	UK-TO-CO-INT-ST-BR-A	black / brass	UK-TO-CO-INT-BL-BR-A
brass	UK-TO-CO-INT-BR-A		

TOGGLE SWITCH

FAQ SHEET

CATEGORY	QUESTION	ANSWER
GENERAL	How do I clean my electricity collection?	A slight damp microfiber cloth is best, never use any chemicals as this will damaged the metal surface.
BACK BOXES	What size back boxes do you recommend?	1G: W 70mm x H 70mm x D 47mm, square back box 2G: W 140mm x H 70mm x D 47mm, square back box Back boxes can be supplied on request.
TOGGLE	Are your toggles 2 way or 3 way?	All our toggles are 2 ways. We also supply intermediate switches in 1G only which are 3 way.
TOGGLE	Are the toggles available as dimmers?	No, unfortunately they are not.
TOGGLE	Can we remove and replace the toggle on the plate?	No, the toggles are fixed to the plate and are unable to be removed.
TOGGLE	Do you manufacture / stock spring loaded toggles?	No, unfortunately we don't.
TOGGLE	Can I mix a toggle switches with a dimmer?	No, unfortunately this is not possible.
TOGGLE	Can I put an intermediate on a 2G plate?	No, unfortunately this is not possible.
TOGGLE	Are your toggles switches dimmable?	No, unfortunately this is not possible.
TOGGLE	The spring action has gone in my toggle?	Please contact Buster + Punch for any faulty product. Please supply photos or videos.