

93° Opening**Inset**Cup Dia $\phi 40$ Bore Depth 15mm
Door Thickness 18~30mm/Glass Thickness 8, 10mm**Mounting Plate 1**
J95-P6T**HEAVY DUTY CONCEALED HINGE J95**TORQUE
HINGESDAMPER
HINGESLIFT
ASSIST
HINGESDETENT
HINGESCONCEALED
HINGESBUTT
HINGESPIANO
HINGESSTEP
HINGESLIFT-
OFF
HINGESPIVOT
HINGESSPRING
HINGESCLEAN
ROOM
HINGESHINGES FOR
ALUMINUM
FRAMEDROP
HINGESGLASS
DOOR
HINGESSPECIAL
HINGES

RoHS	CAD	Item Code	Item Name	Type	Material	Finish	Weight (g)	Box (pcs)
		160-033-660	J95-24/OT	Without Catch	Body/Steel, Cup/Zinc Alloy (ZDC)	Nickel	148	50
		160-033-659	J95-C24/OT	With Catch		Nickel	160	50
		—	J95-24/OT BN	Without Catch	Alloy (ZDC)	Black Nickel	148	50
		—	J95-C24/OT BN	With Catch		Black Nickel	160	50

A mounting plate (sold separately) is required for installation. Please order separately.

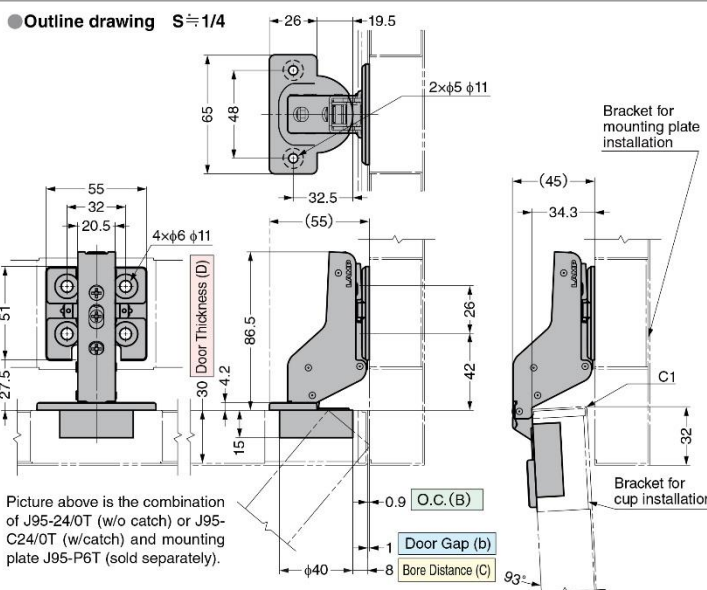
[Sold Separately]

- Mounting plate J95-P6T **1**
- Face plate for glass door GH-J95FP **2**
- Safety cover J95SC-0GR **3**
- Cover for mounting plate J95ZC-GR **4**

[Recommended Screws]

- M5 countersunk head screw,
M5 raised countersunk head
screw

Picture above is the combination of concealed hinge and mounting plate (sold separately).

■ In case of sheet metal door**● Outline drawing S $\frac{1}{4}$** 

Picture above is the combination of J95-24/OT (w/o catch) or J95-C24/OT (w/catch) and mounting plate J95-P6T (sold separately).

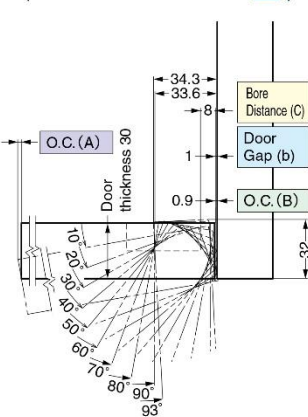
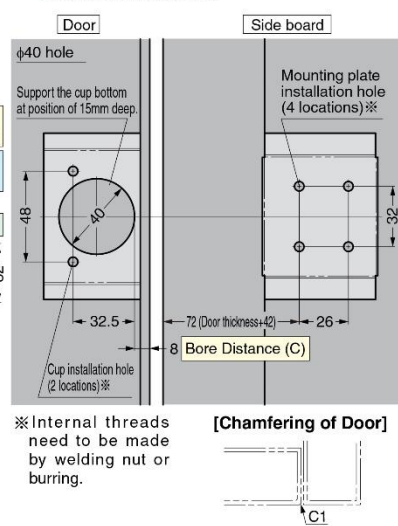
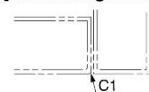
● Locus chart S $\frac{1}{4}$ (How to Use the Locus Chart **5**)**● Cut out dimensions**※Internal threads
need to be made
by welding nut or
burring.**[Chamfering of Door]****[Bore Distance (C)]**

Table-1

Bore Distance (C)	3	4	5	6	7	8
Door Gap (b)	6	5	4	3	2	1

Door gap can be adjusted by turning the overlay adjustment screw.

[Opening Clearance (O.C.)]

Clearances for door edge O.C. (A) and hinge side O.C. (B) are necessary. O.C. (A) and (B) change depending on door thickness and bore distance (C). Refer to locus chart and tables below when designing cabinets.

[O.C. (B)]

Table-2

Door Thickness (D)	Bore Distance (C)					
	3	4	5	6	7	8
18	0	0	0	0	0	0
20	0	0	0	0	0	0
22	0.1	0.1	0.1	0.1	0	0.1
24	0.1	0.1	0.1	0.1	0.1	0.1
26	0.3	0.3	0.3	0.3	0.3	0.3
28	1.7	1.1	0.6	0.5	0.5	0.5
30	3.5	2.9	2.3	1.8	1.0	0.9
32※	5.4	4.7	4.1	3.6	3.0	2.5
34※	7.3	6.6	6.0	5.4	4.8	4.3

※Please refer to the locus chart if door thickness is over 30 mm. O.C. (B) can be made smaller by R chamfering (round chamfer) or C chamfering (chamfer plane) on the door

[O.C. (A)]

Table-3

Door Thickness (D)	Door Width						
	300	400	500	600	700	800	900
30	0.9	0.6	0.5	0.4	0.4	0.3	0.3
	O.C. (A)						

[Door Dimensions and Number of Hinges] **6**Refer to **1** : P.108, **2** : P.110, **3** : P.109, **5** : P.111, **6** : P.100