

LOOX 12V LED 2068 FLEXIBLE STRIP LIGHT, MONOCHROME, 8 MM

The 5 m LED 2068 strip light, with 600 LEDs and a 9.6 wattage per meter, is ideal for direct task lighting to illuminate work spaces or display areas. Corner connectors are available for 90° installation. Can be shortened every 25 mm.

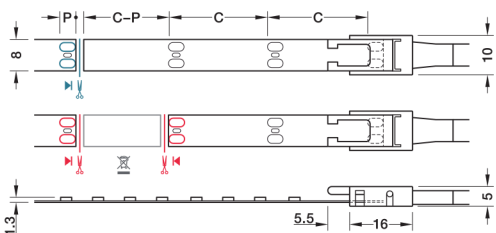


An aluminium profile is recommended for installation of 9.6W/m lights, aluminium profiles are shown from page **5.184**

Loox 12V LED 2068 flexible strip light, 8 mm width



- > Equipped with high quality Samsung LEDs
- > For surface mounting, self adhesive, 5 m length
- > Can be shortened every 25 mm
- > Voltage: 12V. Wattage: 48W (9.6W per metre)
- > Dimmable
- > Degree of protection: IP20
- > Lifetime: >50,000 h
- > Width: 8 mm
- > Height: 1.3 mm
- > With 2.0 m lead with Loox 12V connector
- > White plastic
- > Order qty: 1 pc (roll of 5 m length)



— Cut LED strip light to length (one contact side remains on the remainder piece; reusable)

— Connect LED strip lights (two contact sides required)

C = section length = 25 mm

P = length of contact surface = 4.0 mm

Distance	120°			
	2700 K	3000 K	4000 K	5000 K
250 mm	2145 Lx	2250 Lx	2300 Lx	2300 Lx
500 mm	900 Lx	940 Lx	950 Lx	955 Lx
750 mm	480 Lx	505 Lx	510 Lx	515 Lx
1000 mm	300 Lx	310 Lx	320 Lx	320 Lx

The values apply to a strip light length of 1 m

Output:	2700 K	3000 K	4000 K	5000 K
Light colour:	Warm white		Cool white	
Wattage (W):	9.6W per metre			
Energy efficiency:	A+	A+	A+	A+
Number of diodes:	120 per metre			
Light output (Lm/m):	920	970	1000	1040
Efficacy (Lm/W):	96	101	104	108
CRI Ra / R9:	>90 / >50			



- > Maximum strip length is dependant on driver wattage capacity, shown on page **5.74**
- > Maximum recommended strip light length for optimum visual light output: 4.0 m

12V					
Length	2700 K	3000 K	4000 K	5000 K	
5 m		55546	55547	55548	