

Washed DPB Brass Butt Hinge

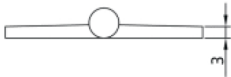
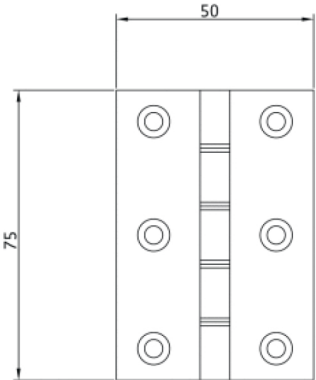
Suitable for medium to heavy weight flush doors Grade 7

Washed	
Technical details	
load capacity	20.0 kg
overall length	75.0 mm
overall width	50.0 mm
knuckle diameter	7.8 mm
material thickness	3.0 mm
screws	8.0 g

Note
Double phosphor bronze tab washed brass butt & projection hinges with 10 year performance guarantee.

Supplied complete with fixing screws if required. Special finishes available upon request.

Items (DIN reference: DIN right and left hand)	
Finish(es)	without
Packing unit	à 10 Pair
item number	1210



front view

While every due care has been taken, we cannot be held responsible for errors, omissions or defects. We kindly ask for your understanding.