

Brass Rising Hinge

Suitable for medium weight toilet cubicle and internal flush doors

Rising / Falling

Technical details

load capacity	45.0 kg
overall length	100.0 mm
overall width	65.0 mm
knuckle diameter	14.5 mm
material thickness	4.0 mm
screws	10.0 g

Note

Rise or fall of 13 mm at 180°

Brass pin

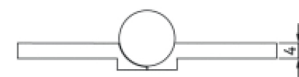
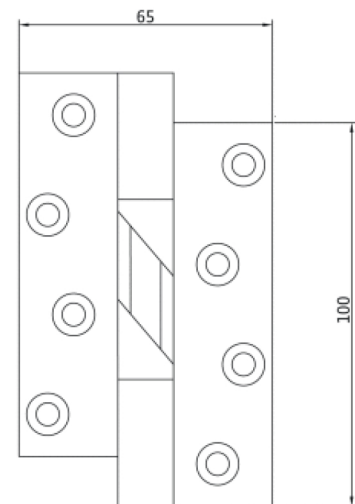
Fitted with heavy duty bronze skews for long life & high resistance to corrosion.

Radius corners optional, by special request. Handed left or right hand.

Supplied complete with fixing screws if required. Special finishes available upon request.

Items (DIN reference: DIN right and left hand)

Finish(es)	without
Packing unit	à 5 Pair
item number	1840



front view