

MARATHON FIRE DOOR KIT - FDK 2

STANDARD KIT SIZES

The MARATHON Fire Door Kit FDK 2 (for non self closing use only) are produced in one standard size for use with doors weighing up to 90kg max. and must be used with a MARATHON Kit 'S3' for doors 750 - 900mm wide or set 'S4' for doors 900 - 1050mm wide or set 'S5' for doors 1050mm - 1200mm wide or set 'S6' for doors 1200mm - 1500mm wide. (S3/S4/S5/S6 not included in Fire Door Kit).

INTUMESCENT SEAL

It is required that intumescent fire seals be incorporated into the door opening framework to contain the fire within the fire area (do not use smoke seals as this will hinder self closing action - seals not supplied by P C Henderson Limited).

FIRE RATING

The Marathon Fire Door Kit is a system developed as part of a half hour sliding fire door assembly to BS 476: Part 22: 1987, and should be installed on the non-fire risk side of an aperture.

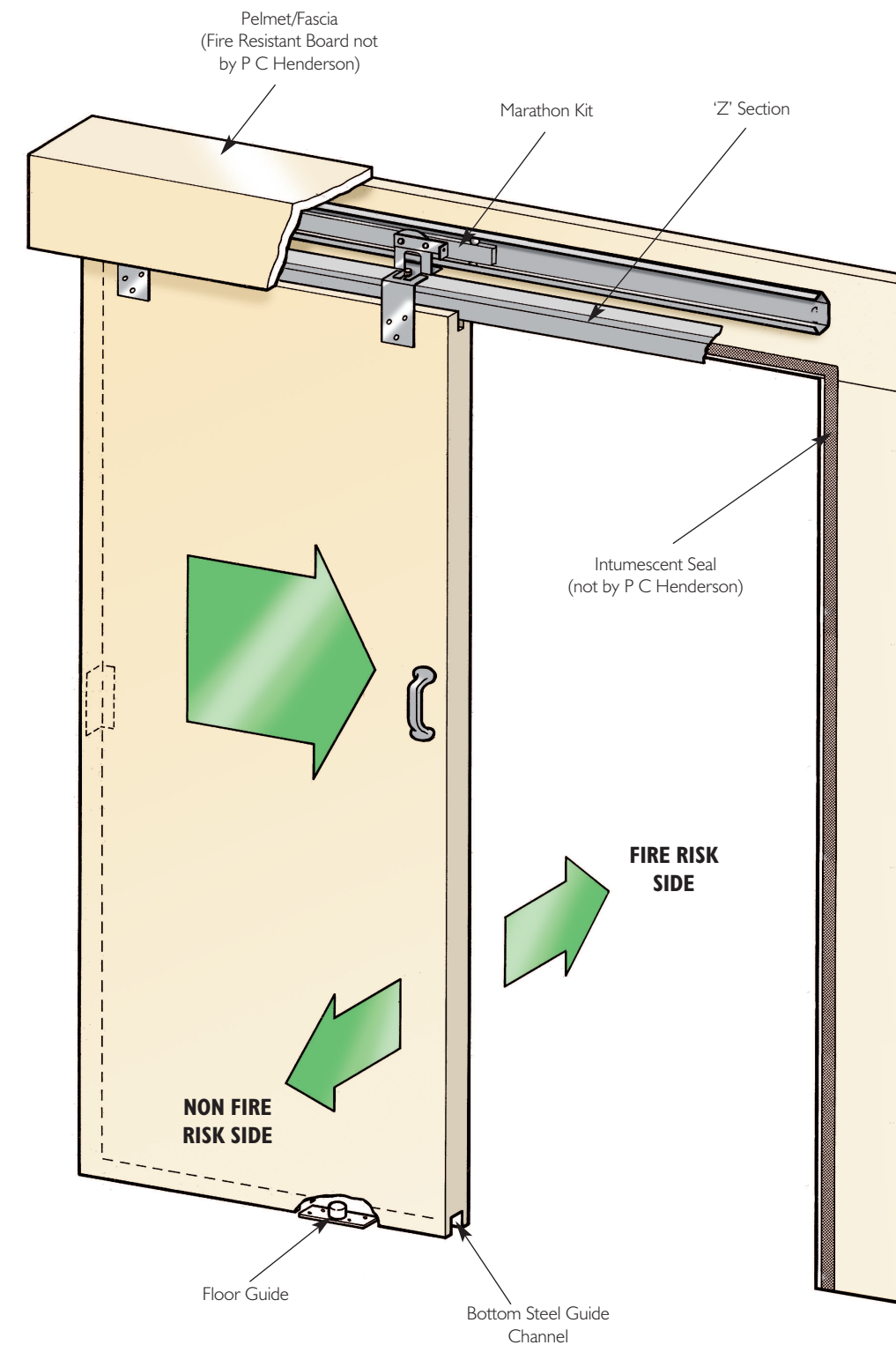
The assembly must be fitted with a solid core FD30, or FD60, timber based fire door positively appraised by Warrington Fire or CERTIFIRE approved. Assessment report WFRC No.C116602 confirms that a sliding fire door assembly, fitted in accordance with these instructions, will offer 30 minutes of fire protection in accordance with BS 476: Part 22: 1987, (ref: report Warres No. 40991).

For further assistance please contact the Technical Sales Team at technical@pchenderson.com

MARATHON FIRE DOOR KIT - FDK 2

FOR FIRE DOORS UP TO 90kg

Designed for use solely in conjunction with the P C Henderson Marathon S3,S4,S5 or S6 gear sets



WARNING:

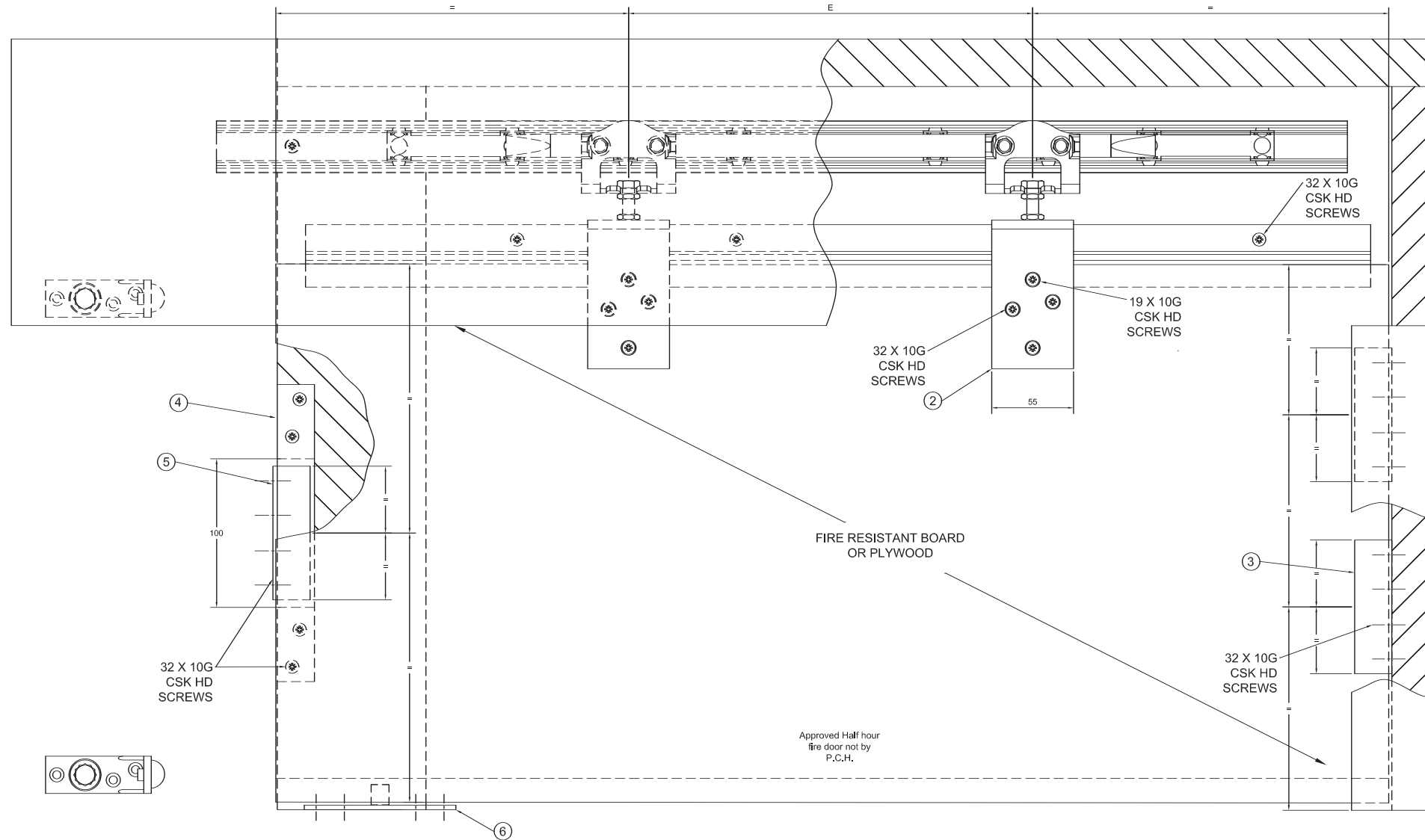
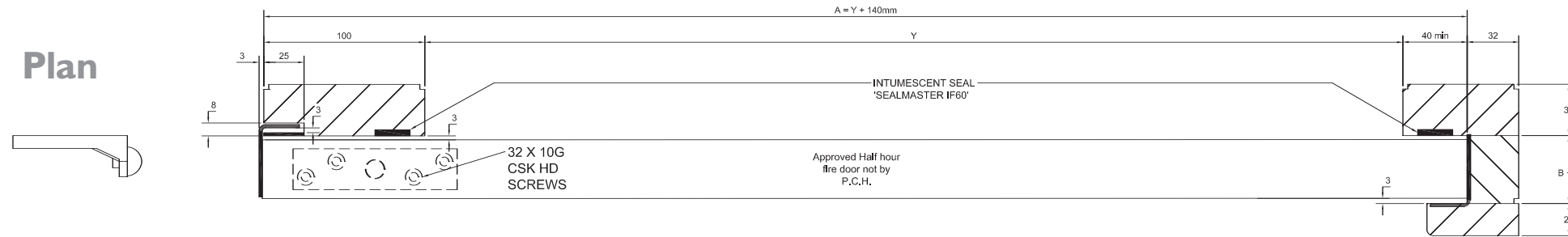
Do not retain in open position. Be aware of the area the door moves through during its operation cycle. Keep people and objects out of the way at all times.

MARATHON FIRE DOOR KIT - FDK 2 Typical Assembly

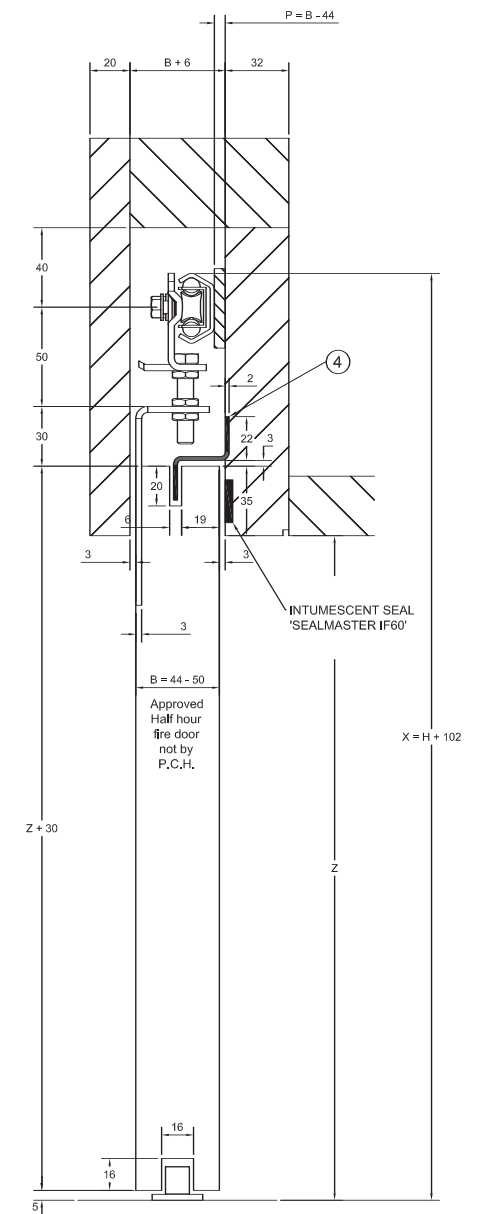
	Door Width, A	Door Thickness, B	Hanger Centres, E	Max. Weight
S3	750 - 900	44 - 50	368	90kg
S4	900 - 1050	44 - 50	445	90kg
S5	1050 - 1200	44 - 50	546	90kg
S6	1200 - 1500	44 - 50	724	90kg

ITEM No.	DESCRIPTION	QTY
1	'Z' Section	1
2	Apron assembly	2
3	Door binder 'front edge'	2
4	Binder 'receiving plate'	1
5	Door binder 'back edge'	1
6	Guide 106/93	1

Plan



Side Elevation



End Elevation