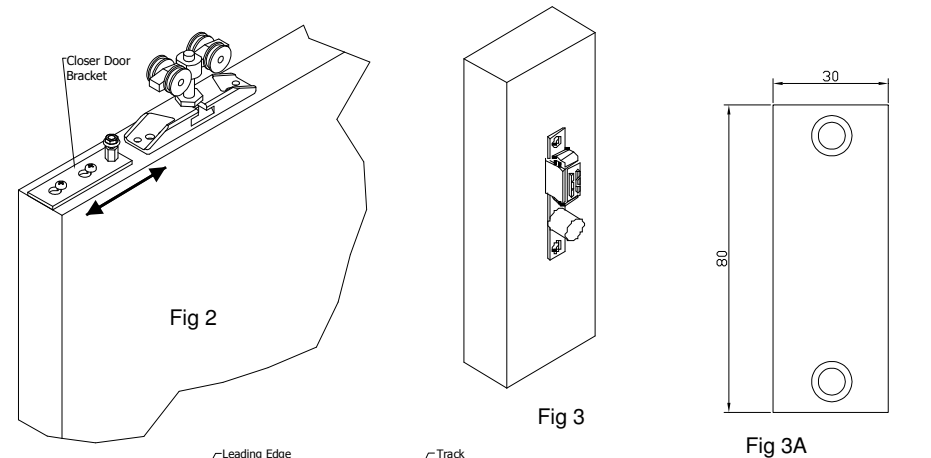
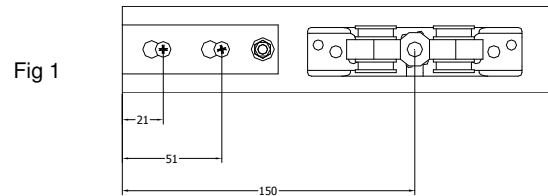
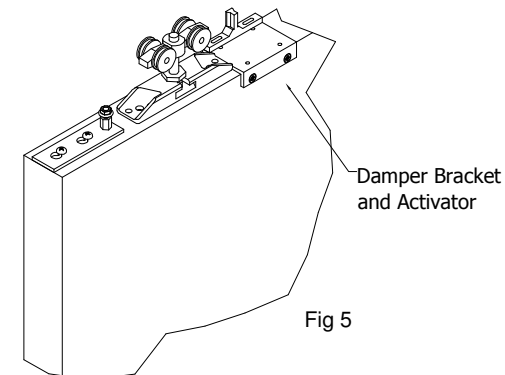
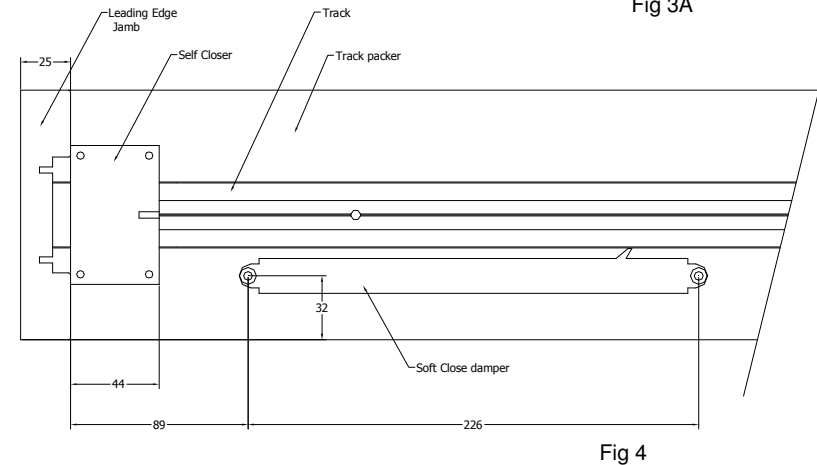


PORTMAN

PC1 Portman self closer with soft closer damper.
For doors weighing 40kg and up to 1450mm wide.



1. Pilot drill and screw in the two M4 x 40mm long wood screws in the positions shown in figure 1 on the top of the door at the leading edge. Do not fully tighten these screws leave the heads sitting 4mm above the top of the door..
2. Drop the closer door bracket over the screws from step 1, and slide it until it is level with the leading edge of the door. DO NOT TIGHTEN THE SCREWS. This bracket should remain removable. See figure 2
3. Remove the Closer door bracket and hang the door.
4. Fix the magnet bracket (Figure 3) to the heel edge of the door level with the handle height. Using the No 6 x 1 1/2" wood screws and fix the magnet plate (Figure 3A) to the inside face of the rear stud so that it engages on the magnet and black rubber buffer. Please note that you may need to remove some material from the stud work at the back of the pocket to allow the door to finish flush with the cassette edge jambs.
6. Fit the soft close damper in the position shown in Fig 4(Viewed looking up at the track), using the screws provided. Ensure that it is installed the correct way round.
7. Fix Self Closer box to the track packer as shown in figure 4. Using the No 6 x 1 1/2" wood screws.
8. Extend the closer cable and hook the door bracket over the screws in the top of the door.
CAUTION: A sudden release of the cable could cause damage to the closer mechanism.
9. Fix the black plastic damper activator to the Damper bracket using the small machine screws in the outer most holes when used on a 44mm thick door. (For a 35mm thick door use the second set of holes). And fix to the top of the door as shown in Fig 5.
10. A 5mm deep by 44mm wide mortise needs to be removed from the door head timber jamb to accommodate the closer box. This mortise will also allow the closer box to be removed without removal of the head jambs. A 240x10deepx15mm high mortise is required for the soft close damper.
11. Fit the door head jamb.
12. Test the operation of the closer mechanism before enclosing the pocket.



WARNING! DO NOT APPLY ANY ADDITIONAL SUBSTANCES, LUBRICANTS ETC. TO THE DAMPER. DOING SO MAY DAMAGE THE PRODUCT AND VOID THE WARRANTY.

IF DIFFICULTY IS EXPERIENCED IN FITTING, CONTACT THE MANUFACTURERS. 003-250 Rev 5
USE OF POWER DRIVERS NOT RECOMMENDED.

Royde & Tucker Ltd, Bilton Road, Hitchin, SG4 0SB Tel:01462 444466 Fax:01462 444433