



TECHNICAL SPECIFICATIONS

S1041-SN THUMB TURN

SNIB TURN & RELEASE SETS IN SATIN NICKEL



SATIN NICKEL (SN)



52^{mm} length (l) | 35^{mm} projection (p) | 52^{mm} max grip width (w)

Dimensional Tolerance +/- 1.5^{mm}

OTHER FINISH OPTIONS



BRIGHT CHROME BC



SATIN NICKEL SN



POLISHED NICKEL PN



DARK BRONZE DB



POLISHED BRASS PU



FINE ANTIQUE BRASS FA

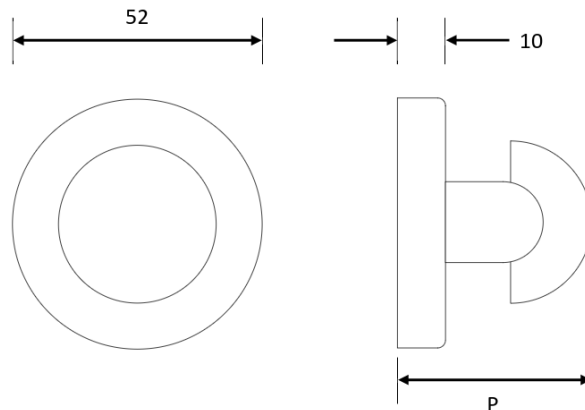


VINTAGE NICKEL VN



VINTAGE PATINA VP

DIMENSIONS



TURNSTYLE DESIGNS LTD

Factory: Baron Way, Roundswell Business Park, Barnstaple, Devon, EX31 3TB, England
+44 (0)1271 325325 - www.turnstyledesigns.com - sales@turnstyledesigns.com